



Palantir Technologies

VAST 2008 Grand Challenge

- ... a new approach to building contextually-grounded visual analytics environments.

- ... a new approach to building contextually-grounded visual analytics environments.
- ... a thriving startup nestled in the heart of Silicon Valley.

- ... a new approach to building contextually-grounded visual analytics environments.
- ... a thriving startup nestled in the heart of Silicon Valley.
- ... the next big thing from the folks that brought PayPal into the world.

- ... a new approach to building contextually-grounded visual analytics environments.
- ... a thriving startup nestled in the heart of Silicon Valley.
- ... the next big thing from the folks that brought PayPal into the world.
- ... an enterprise software products company.

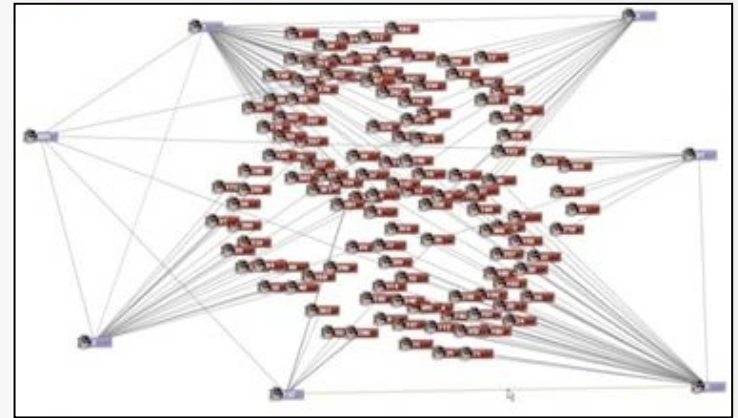
We build
platforms for human-driven analysis.

- Turn hard user problems into hard software problems

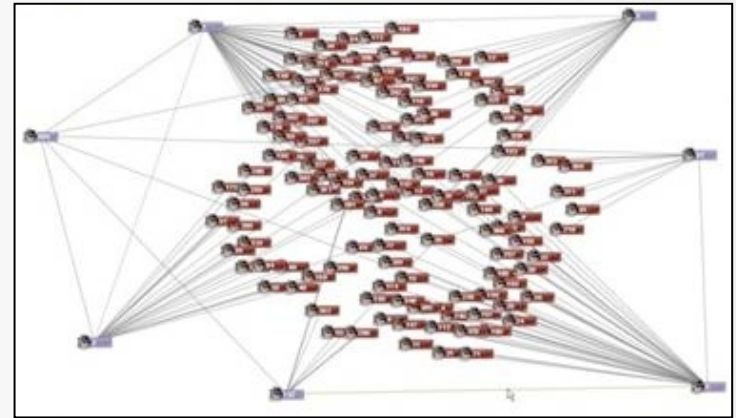
- Turn hard user problems into hard software problems
- Use all of the tools available
 - Human-centric design calls for an amalgamation of techniques and technologies into coherent systems

- Turn hard user problems into hard software problems
- Use all of the tools available
 - Human-centric design calls for an amalgamation of techniques and technologies into coherent systems
- Create and use metaphors familiar to domain users
 - Keep model at a high, conceptual level
 - e.g., people instead of rows

- Turn hard user problems into hard software problems
- Use all of the tools available
 - Human-centric design calls for an amalgamation of techniques and technologies into coherent systems
- Create and use metaphors familiar to domain users
 - Keep model at a high, conceptual level
 - e.g., people instead of rows
- Produce low-friction interfaces and workflows
 - Automate anything that's obvious
 - Use interface elements to reduce human work
 - Make it all look (and feel) easy

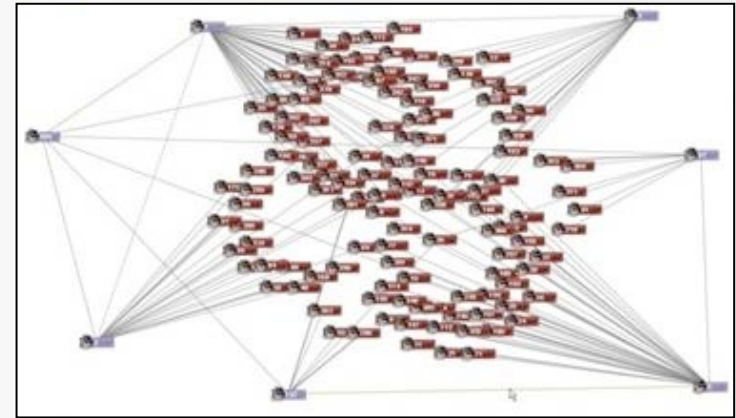


- Core model: object graph
 - Data from multiple sources map into single conceptual model
 - Nodes represent real-world things (**entities, events, documents**) with properties
 - Links model **relationships**
 - Types are user-defined



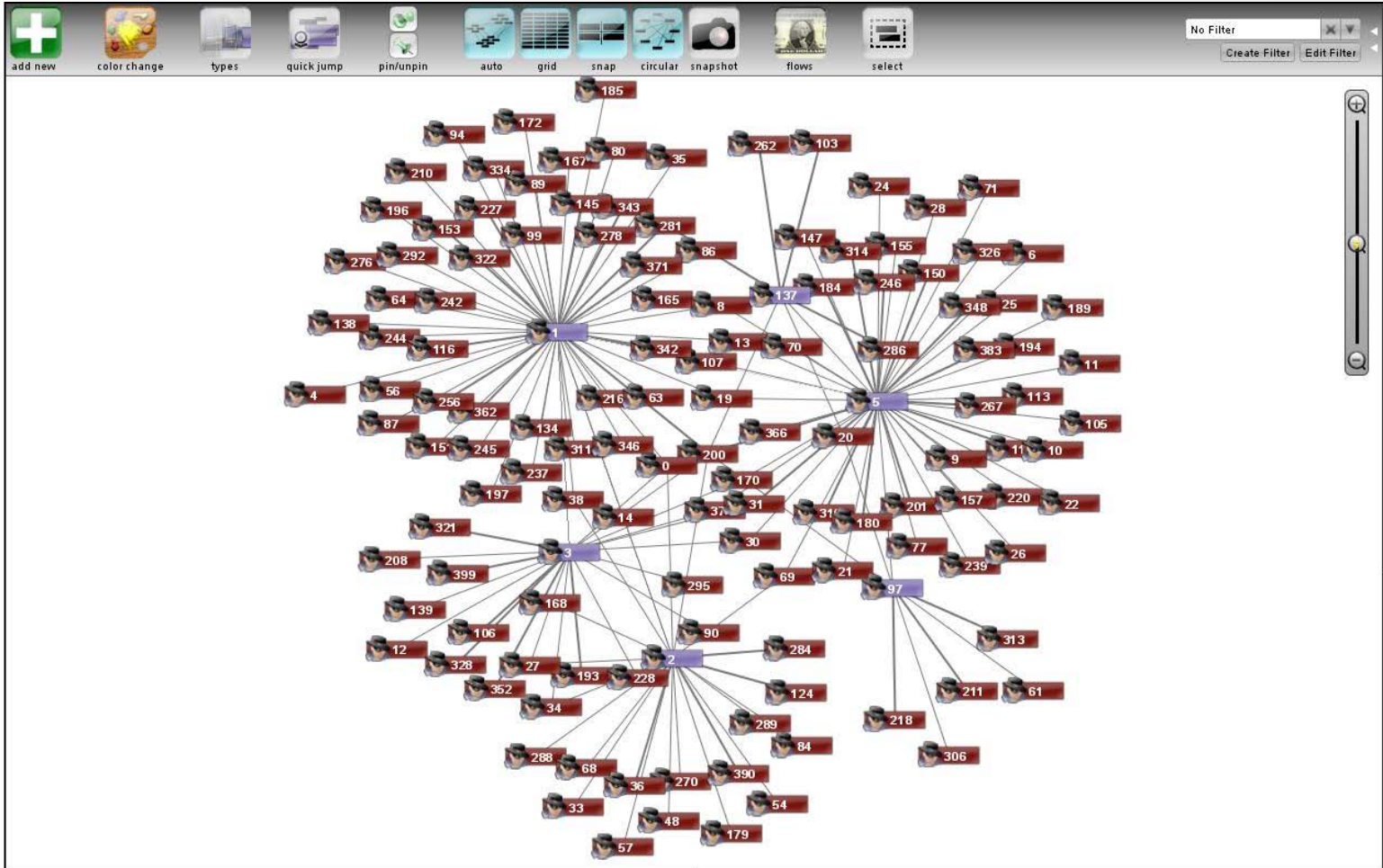
- Core model: object graph

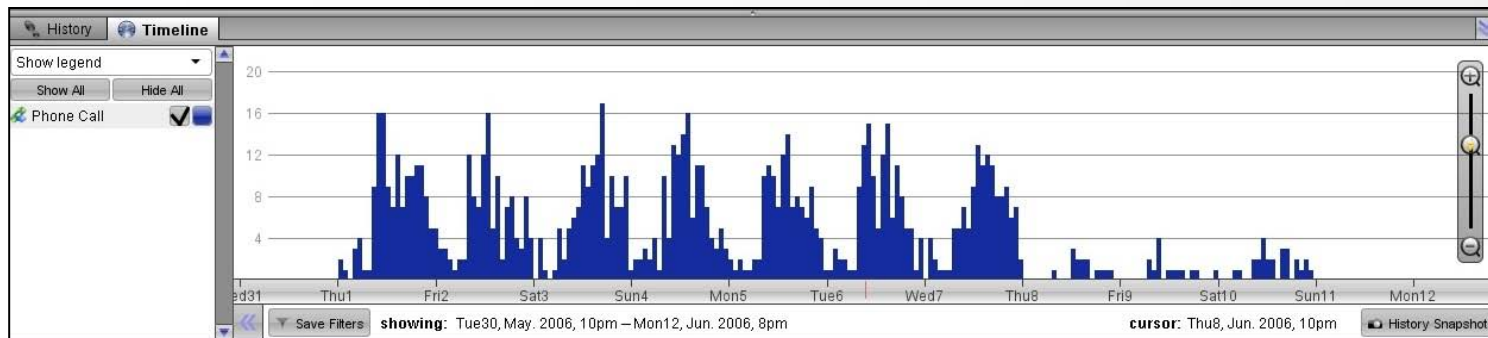
- Data from multiple sources map into single conceptual model
- Nodes represent real-world things (**entities, events, documents**) with properties
- Links model **relationships**
- Types are user-defined



- User metaphor: customizable based on user context!

- CT: People, organizations, meetings, emails, sightings
- Corporate intel: products, meetings, hiring, firings





Selection
Histogram

History Snapshot
Show 7 By Default

Object Types

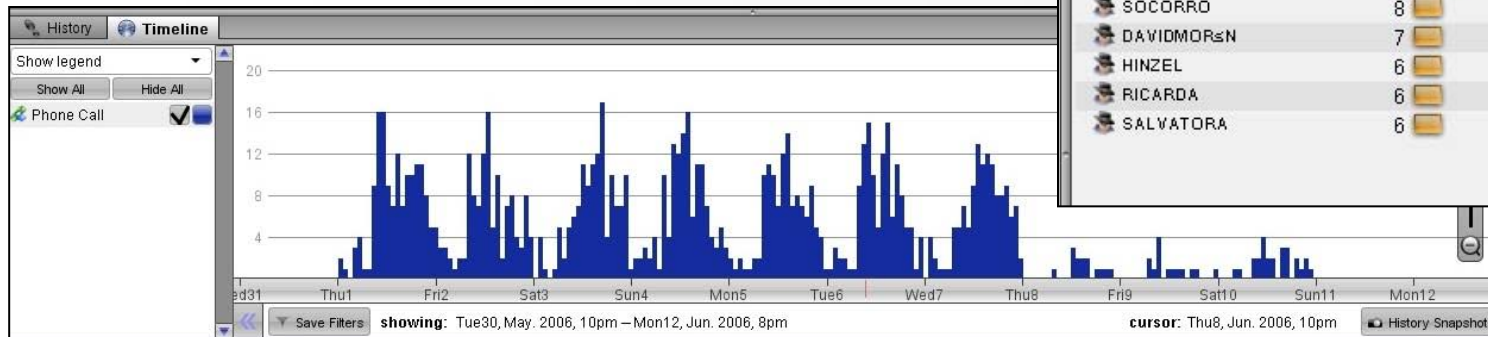
Event Types (2/2) show [more](#) / [less](#) / [all](#) / [none](#)

All Events	834	
Wiki Edit	834	

Event Properties

Username (16/97) show [more](#) / [less](#) / [all](#) / [none](#)

AMADO	66	
VICTORIAV	49	
SARA	45	
AGUSTIN	37	
EDEMIR	36	
RYOGANICA	25	
RM99	24	
ADRIANO	22	
BAKBOT	19	
DAILOSTAMANCA	15	
66.66.125.X	14	
SOCORRO	8	
DAVIDMOR&N	7	
HINZEL	6	
RICARDA	6	
SALVATORA	6	





Selection **Histogram**

History Snapshot Show 7 By Default

Object Types

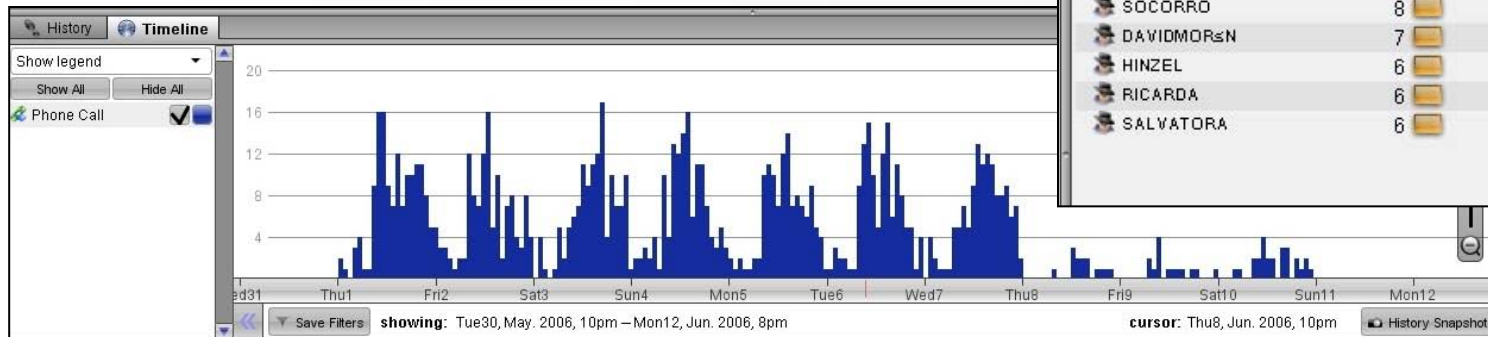
Event Types (2/2) show [more](#) / [less](#) / [all](#) / [none](#)

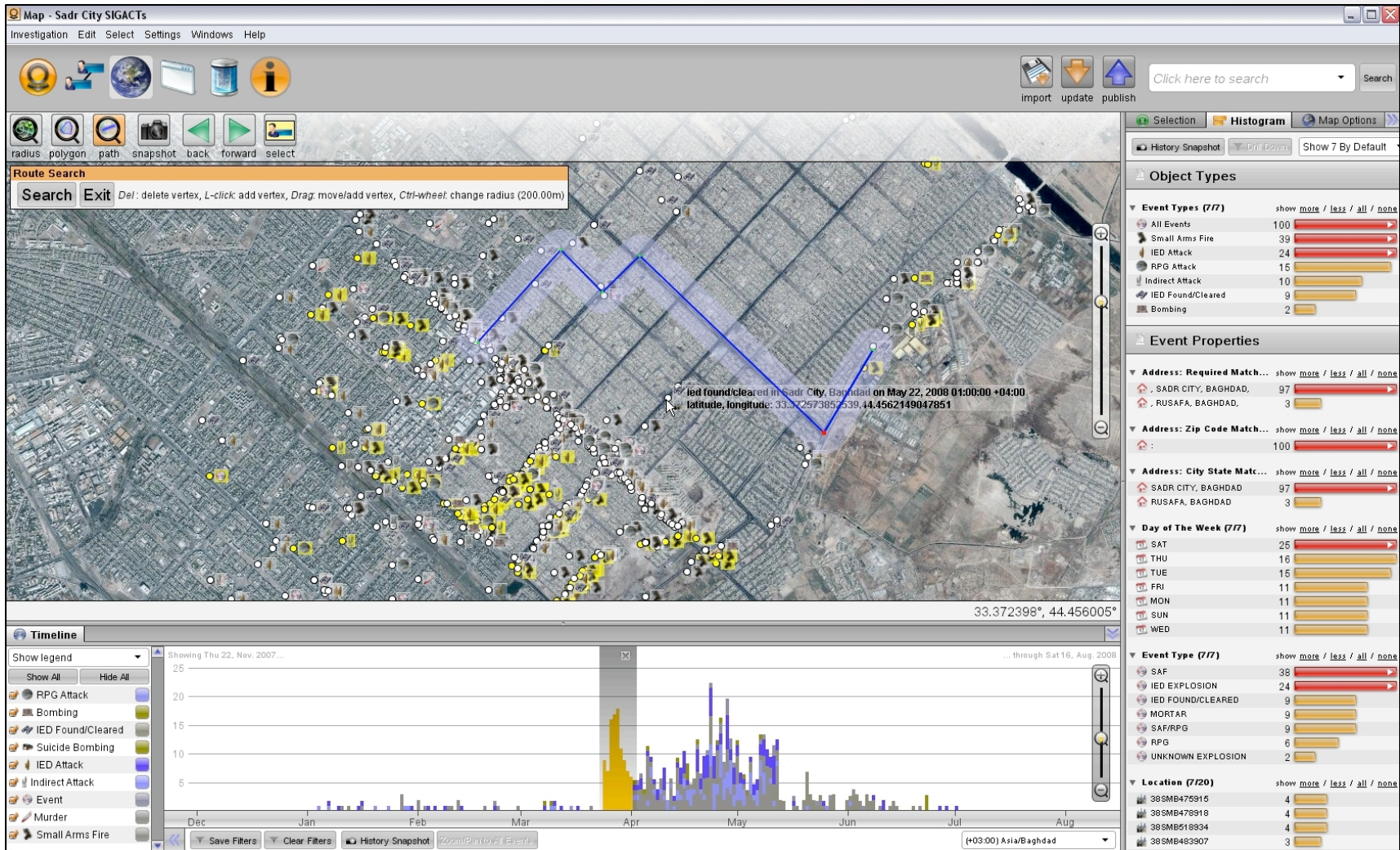
All Events	834	<div style="width: 100%;"></div>
Wiki Edit	834	<div style="width: 100%;"></div>

Event Properties

Username (16/97) show [more](#) / [less](#) / [all](#) / [none](#)

AMADO	66	<div style="width: 100%;"></div>
VICTORIAV	49	<div style="width: 100%;"></div>
SARA	45	<div style="width: 100%;"></div>
AGUSTIN	37	<div style="width: 100%;"></div>
EDEMIR	36	<div style="width: 100%;"></div>
RYOGANICA	25	<div style="width: 100%;"></div>
RM99	24	<div style="width: 100%;"></div>
ADRIANO	22	<div style="width: 100%;"></div>
BAKBOT	19	<div style="width: 100%;"></div>
DAILOSTAMANCA	15	<div style="width: 100%;"></div>
66.66.125.X	14	<div style="width: 100%;"></div>
SOCORRO	8	<div style="width: 100%;"></div>
DAVIDMOR&N	7	<div style="width: 100%;"></div>
HINZEL	6	<div style="width: 100%;"></div>
RICARDA	6	<div style="width: 100%;"></div>
SALVATORA	6	<div style="width: 100%;"></div>





Spring 2008 Sadr City Battle (unclassified)

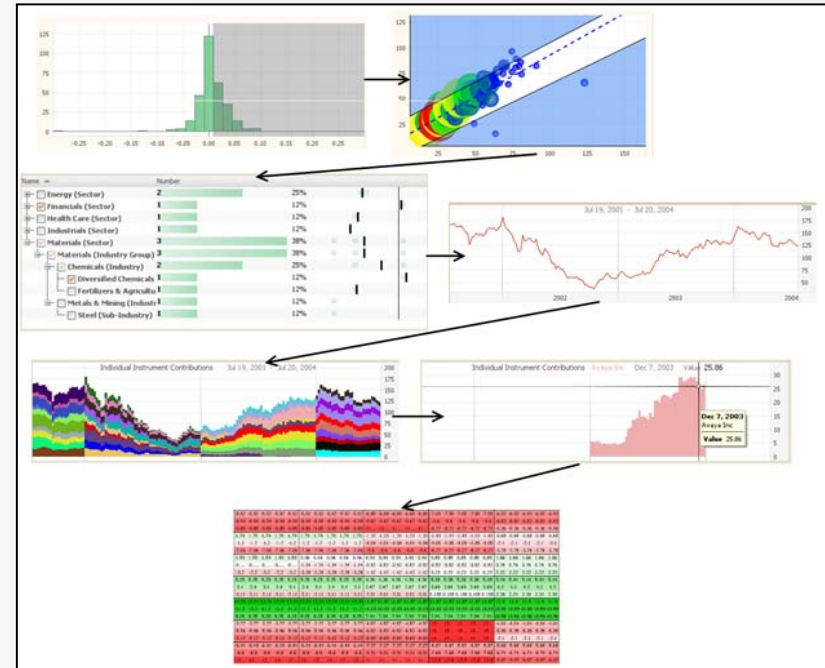


- And we've barely scratched the surface...
 - Data import (structured and unstructured)
 - Data sourcing
 - Entity resolution
 - Persistent searches
 - Object graph revisioning (akin to source control)
 - Secure Collaboration
 - Presentation
 - ...

- And we've barely scratched the surface...
 - Data import (structured and unstructured)
 - Data sourcing
 - Entity resolution
 - Persistent searches
 - Object graph revisioning (akin to source control)
 - Secure Collaboration
 - Presentation
 - ...
- Integration of technologies enables **powerful workflows** which may be significantly more difficult without an

- Core model: time-series analysis

- Objects model the language of finance: equities, indices, groups, portfolios, strategies

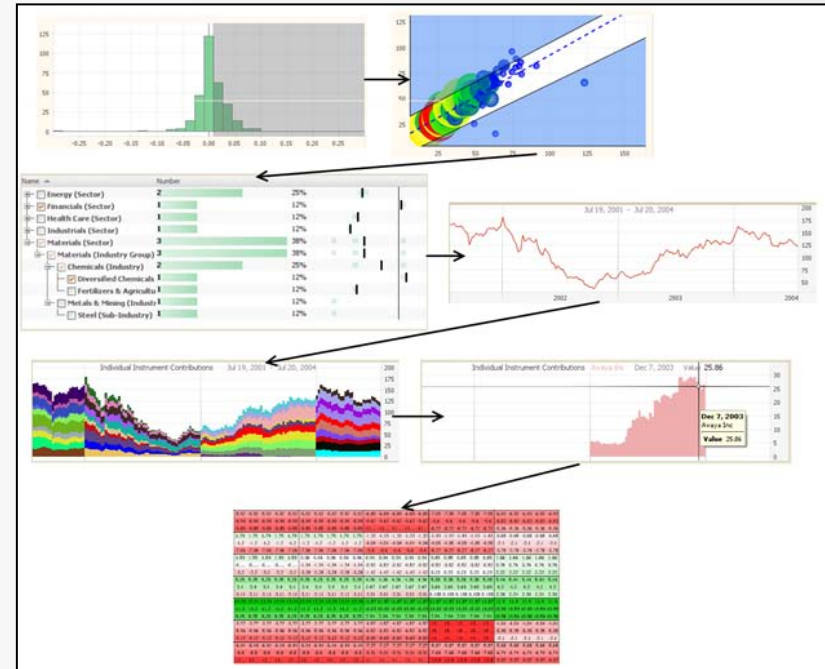


- Core model: time-series analysis

- Objects model the language of finance: equities, indices, groups, portfolios, strategies

- User metaphor: financial markets

- Stocks, bonds, futures...
 - Correlation, volatility, rolling-average...
 - Indices, trading strategies, market indicators...



- The Palantir Government product is operational at intel, defense, and law enforcement agencies all over the world.

- The Palantir Government product is operational at intel, defense, and law enforcement agencies all over the world.
- The Palantir Finance product is currently deploying to multiple financial institutions.

- The Palantir Government product is operational at intel, defense, and law enforcement agencies all over the world.
- The Palantir Finance product is currently deploying to multiple financial institutions.
- Where to next?
 - Drug discovery/genomics/proteomics
 - Legal discovery and analysis
 - Corporate fraud/compliance
 - Climatology research

- Support for all aspects of analysis
 - Data integration
 - Knowledge management
 - Search and discovery
 - Visualization
 - Collaboration

- Support for all aspects of analysis
 - Data integration
 - Knowledge management
 - Search and discovery
 - Visualization
 - Collaboration

- Interoperability

- Support for all aspects of analysis
 - Data integration
 - Knowledge management
 - Search and discovery
 - Visualization
 - Collaboration
- Interoperability
- Extensibility

- Palantir espouses a new approach to building powerful, contextually-grounded platforms for analysis.

- Palantir espouses a new approach to building powerful, contextually-grounded platforms for analysis.
- We're a rapidly growing Silicon Valley startup.

- Palantir espouses a new approach to building powerful, contextually-grounded platforms for analysis.
- We're a rapidly growing Silicon Valley startup.
- We're hiring!

- Palantir espouses a new approach to building powerful, contextually-grounded platforms for analysis.
- We're a rapidly growing Silicon Valley startup.
- We're hiring!
- And we're offering **\$5,000 referral bonuses!**



<http://www.palantirtech.com/>

<http://www.palantirtech.com/vast2008/>